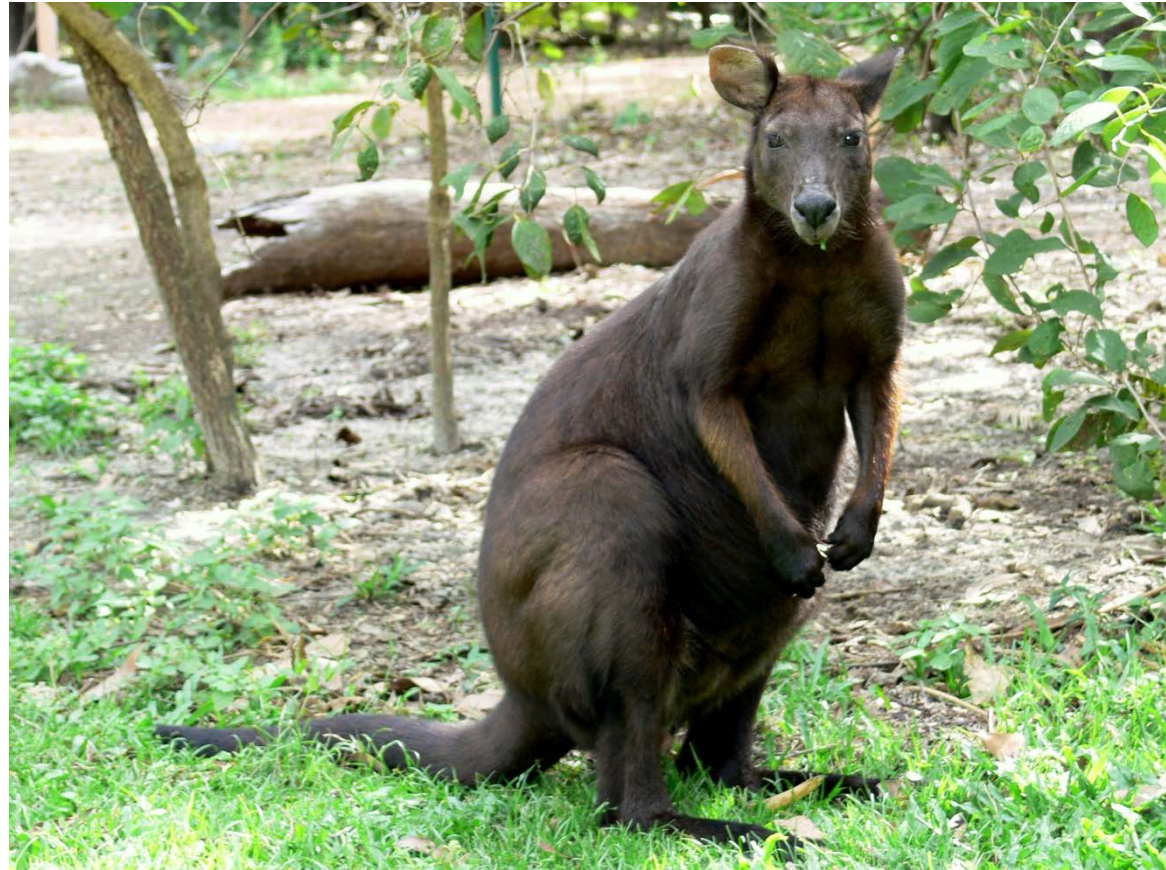
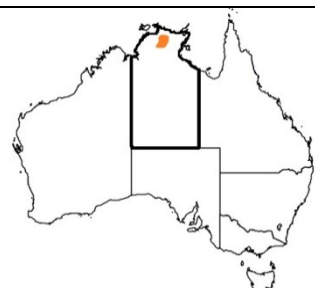





BLACK WALLAROO

Black Wallaroo, <i>Macropus bernardus</i>
Head and body
<i>Males 595-725mm</i>
<i>Females 640mm</i>
Tail Length
<i>Males 545-640mm</i>
<i>Females 575mm</i>
Weight
<i>Males 19-22kg</i>
<i>Females 13kg</i>
Identification
<i>Males are a dark sooty brown to black all over, females are pale grey to grey-brown with lighter underneath both sexes have darker points. Ears are short.</i>
Behaviour
<i>Extremely wary and flighty. Adults are solitary or in pairs. Nocturnal in nature except on overcast days. Feeds on a wide variety of vegetation in its range.</i>
Reproduction
<i>There is little known about the reproductive behaviour but large pouch young may be seen through the Dry season (June-September).</i>
Habitat
<i>Restricted to the sandstone plateau of western Arnhem Land.</i>



NT Conservation Status					
Extinct	Threatened			Least Concern	
EX	EW	CR	EN	VU	NT
Distribution					
					

Threats		
 Habitat Loss	 Humans	 Feral Dogs



Male



Female



Habitat



Hand-raising