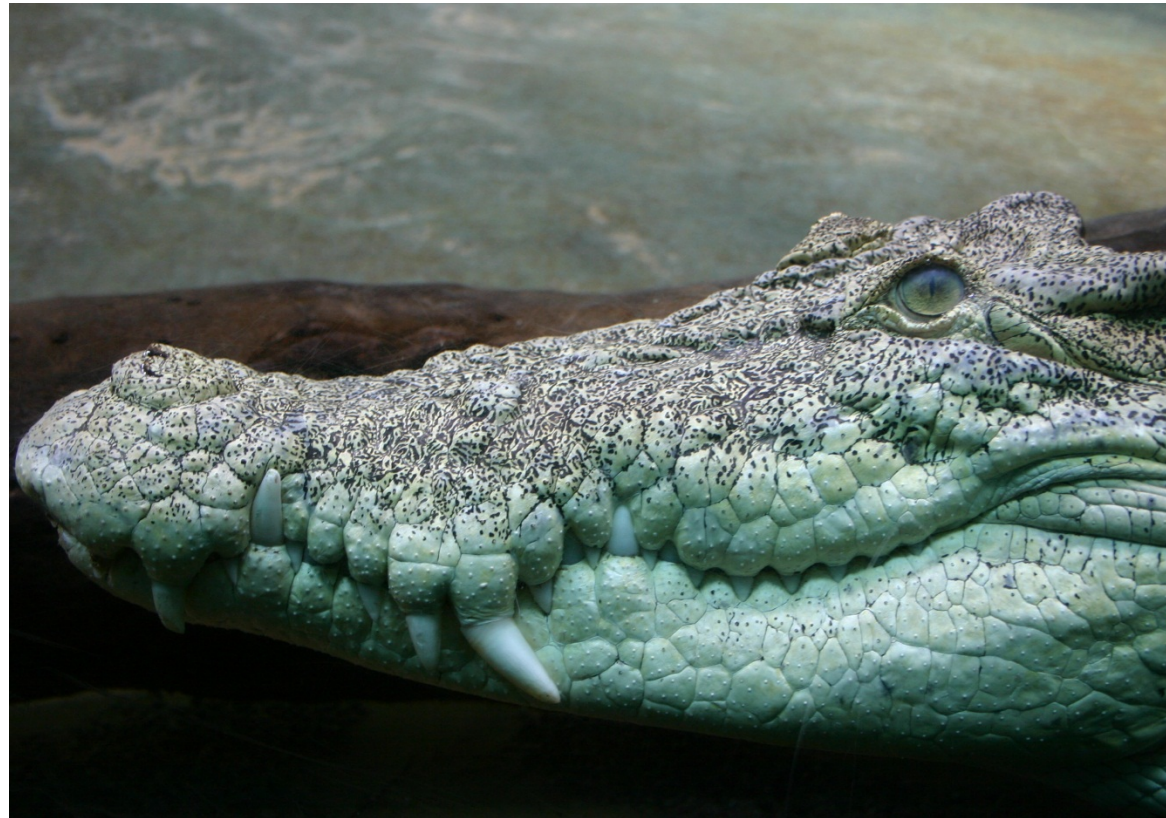




SALTWATER CROCODILE



Saltwater Crocodile, <i>Crocodylus porosus.</i>
Total Length
Males grow up to 6 metres average is 4-5. Female reach around 3.2 metres.
Weight
400 to 1500kg
Identification
Unmistakable, a wide snout and broad body compared to most crocodiles with powerful tails.
Behaviour
It is the largest of all living reptiles, as well as the largest terrestrial and riparian predator in the world. Diet ranges from fish to buffalo including people.
Reproduction
Females lay 40 to 60 eggs between November and March in large aquatic nests. Temperature determines sex of offspring (low=female high=male). Approximately 1% of the hatchlings survive to adulthood.
Habitat
May be found in any water body in northern Australia including fresh and salt water. Range from Broome in Western Australia, through the Northern Territory to Rockhampton QLD.



NT Conservation Status		
Extinct	Threatened	Least Concern
EX	EW CR EN VU	NT LC
Distribution		
Threats		
Habitat Loss	Crocodiles	Humans



Habitat



Hatchlings



Skin



Crocwise